

Tarrangower Times

Est 1858

www.facebook.com/TarrangowerTimes

www.tarrangowertimes.com.au

Friday, July 9, 2021

DANCING CANDY CANES



☆ Frank and Lauren, owners of Much Ado, embrace the spirit of Christmas in July.
more photos page 4.

The icy cold last Saturday night prevented the Maldon Brass Band from playing at Maldon in Winter's late night shopping event. Fortunately, the weather did little to deter shoppers from exploring the shopkeepers' wares and enjoying the festivities.

Not all the shops were open, but the majority of businesses that were, found the event to be successful.

There was a massive crowd in Much Ado, enjoying mulled wine and entertainment from the owners, Frank and Lauren, dressed as candy canes and performing a choreographed dance routine.

Maldon Takeaway and Beaton's both had a number of new customers during the event.

"I did roughly 30 per cent of a day's trading by staying open for the late night shopping," said Kylie Trott, manager of Beaton's. "We'll definitely be doing it again later in the year when the weather is warmer."

Stephen McMahon was happy with the turnout at 48 Main to see Melbourne band Moonlover perform.

"It's great to be back. The Maldon people have been so supportive and it's great to be able to repay their loyalty."

Not far from town, at the Maldon Machinery Museum, SteamPacket held another successful gig with performers The Substitutes playing the greatest hits of the sixties, with visitors from Bendigo, Castlemaine and Melbourne dancing and singing along to well-known songs.

TUNNEL CLOSURE



☆ Carmans Tunnel remains closed to the public.

MANY local residents are wanting to know what's in store for local tourist attraction Carmans Tunnel after its closure in 2020.

The Department of Environment, Land, Water and Planning (DELWP) have received a geotechnical assessment of the integrity of the tunnel and are currently exploring options for the future use of the site.

"Carmans Tunnel will remain closed while the Department of Environment, Land, Water and Planning works with technical specialists to determine whether the site can be reopened for public access, what the costs will be to enable that access to occur, and whether a new manager can be identified for the site," said DELWP Program Manager Gavin Parkes.

Member for Bendigo West, Maree Edwards, told the TT: "Works have been done to find out what is required for health and safety. The next step is to find funding for the

Continued on page 3

ADVERTISEMENT



Federal Member for Bendigo

LISA CHESTERS MP



PO Box 338 Bendigo 3552
Cnr. Williamson & Myer Sts, Bendigo 3550

T: 03 5443 9055 • F: 03 5443 9736
E: Lisa.Chesters.MP@aph.gov.au

www.lisachesters.org

@LMChesters • @LMChesters

Authorised by L. Chesters, ALP, 16 Myers Street, Bendigo

ADVERTISEMENT

Maree Edwards MP

STATE MEMBER FOR BENDIGO WEST

Listening Posts are postponed until further notice.

My office is still available for assistance, please contact us on 5410 2444 or maree.edwards@parliament.vic.gov.au.

Suite 3, 16 Lockwood Road
(PO Box 1238),
Kangaroo Flat, Vic 3555

P: 5410 2444

www.mareeedwards.com.au

Authorised by M Edwards, 16 Lockwood Road, Kangaroo Flat
Funded from Parliamentary Budget



Thompson Family Funerals
NFDA (03) 5472 2202
123 Mostyn St, Castlemaine 3450

Compassion, Respect & Understanding

Prearranged & Prepaid Funerals available.

Peter Thompson and family of **Thompson family Funerals**
Proudly serving the people of Castlemaine and district since 1950
~ The family that care ~





Community Diary

If you have a community event that you would like publicised in this Community Diary, please email: karen@tarrangowertimes.com.au or send details to us at PO Box 18 Maldon 3463, or drop a note into the letterbox in the office door to have it listed.

This is a free community service.
It is a good idea to advertise closer to the event.

EVERY DAY EXCEPT MONDAY

LIONS CLUB OP SHOP, 10am to 2pm. Enq: Jenny 0407 158 833.

FIRST SUNDAY OF THE MONTH

CASTLEMAINE FARMERS MARKET, 9am to 1pm at the IGA carpark in Forest Street. Enq: www.castlemainefarmersmarket.org or 0490 366 243.

EVERY SUNDAY

MALDON MUSEUM, Shire Gardens, 11.30am - 2pm. Admission \$2.50 adults, children free.

EVERY SUNDAY FORTNIGHT

MALDON PÉTANQUE CLUB games every second Sunday at St. Brigid's at 1.30 for a 2pm start. Enq: Sandy Noble 0429 006 130. Andrew Leckie 5400 1054.

SOCIAL PÉTANQUE is played on the Penny School pistes every second Sunday, alternating with MPC, at 1.45 for a 2pm start, unless rain is bucketing down, or it is over 30°. Enq: 0459 093 452.

SECOND SUNDAY OF THE MONTH

MALDON MARKET: Hand Made, Home Grown, 9am - 1.30pm. Bill Woodfull Recreation Reserve.

THE MALDON VINTAGE MACHINERY & MUSEUM is a haven for machinery enthusiast's before and after the industrial revolution, but with more. Open 10am-4pm. Entry free - donations welcome. More info: Peter 0408 146 537.

LAST SUNDAY OF THE MONTH

CASTLEMAINE REPAIR CAFE, 10am - 1pm at Castlemaine Community House ,30 Templeton St. Enter from back door. Bring along broken electrical, general sewing repairs and maybe a cuppa and weekend paper in case you have to wait a while. No kitchen because of COVID. Gold coin donation. Learn to repair.

EVERY MONDAY

OCCASIONAL CHILDCARE, Maldon Neighbourhood Centre 9.30am-2.30pm. Enq. 5475 2093 or info@maldonnc.org.au.

ATHENAEUM LIBRARY, High Street, Maldon. 2-4pm. Suzette Phillips 0429 776 893.

MALDON BRIDGE CLUB at the Maldon Hotel, 1.15pm - 4.30pm. New players welcome including solo players. Enq: Danny Murphy 0430 733 782.

MALDON WALKING GROUP, starting at 9.30am for a gentle walk. Start at Maldon Neighbourhood Centre. No booking required. Cancelled if heavy rain or a Code Red Day. Enq: 5479 1000.

SOCIAL GOLF - 8.30am - 9 holes, free for members or \$10 green fees. Enq: maldongolf4u@gmail.com or Gay Reid 0413 013 766.

Tarrangower Times

Your Paper, Your Stories, Your News!

Est 1858

Available from: Maldon Newsagency, Castlemaine Newsagency, Newstead Country Store and Baringhup General Store.

4/93 High Street (PO Box 18), Maldon Vic 3463.
Tel: (03) 5475 2256

Email: editor@tarrangowertimes.com.au
www.tarrangowertimes.com.au
www.facebook.com/TarrangowerTimes
www.instagram.com/tarrangower_times

Other contact details:

Jade Jungwirth (Editor) 0408 594 246 or jade@tarrangowertimes.com.au
Karen Sloan (Design | Accounts) 0404 357 556 or karen@tarrangowertimes.com.au
Kerry Cain (Advertising) 0419 102 723 or kerry@tarrangowertimes.com.au

Guaranteed Office Hours:

Mon: 9am - 11am, Tues: 9am -12pm, Wed: 9am - 1pm.

ADVERTISEMENT LODGEMENT TIMES:

- Classifieds - 12noon Tuesday.
- Casual Display - 12noon Tuesday.

CONTRIBUTED ARTICLES:

- Community and News 12noon Tuesday.
- Late notices such as Births and Deaths by 10.30am Wednesday.

The Tarrangower Times is a member of the Victorian Country Press Association. The Times is owned by Tarrangower Times Pty Ltd, edited by Jade Junwirth and printed at Express Print, Morwell.

Copyright in this publication is held by Tarrangower Times Pty Ltd. Reproduction of any portion including advertisements and photographs without permission is not permitted and may constitute an offence. Copyright © 2021.

FIRST MONDAY OF THE MONTH

CRYPTIC CROSSWORD MORNINGS from 10am MNC Community garden.

SECOND MONDAY OF THE MONTH

THE MALDON GARDEN, FLORAL ART AND CRAFT CLUB, 2pm. Enqs: Carmel 0417 014 763 or Robyn 0418 544 966.

THIRD MONDAY OF THE MONTH

CRYPTIC CROSSWORD MORNINGS from 10am MNC Community garden.

THE MALDON GARDEN, FLORAL ART AND CRAFT CLUB, 2pm. Enqs: Carmel 0417 014 763 or Robyn 0418 544 966.

EVERY TUESDAY

COMMUNITY TRANSPORT SERVICE. Book the day prior for your door-to-door service. Trips within and to Maldon & Castlemaine in the morning, fortnightly trips to Maryborough and Kangaroo Flat. Phone 5475 2093. \$3 one way, \$5 return. More info: www.maldonnc.org.au/community-bus.

MAH JONG for seniors 10am-1pm at Maldon Community Centre. Beginners welcome. Enquiries: Kerry 0407 738 855.

COMMUNITY PANTRY Delicious home-delivered meals. Order info@maldonnc.org.au or 5475 2093.

MALDON BOWLING CLUB, at 10am, as long as COVID restrictions allow.

MALDON BRISK WALKING GROUP, 7.30am meet at Maldon Neighbourhood Centre.

MALDON SOCIAL TABLE TENNIS, 1.30pm-3.30pm, Maldon Community Centre. Cost \$10 subscription to Maldon Seniors, \$2 donation on the day. Enq. Anne 0425 859 662.

MALDON CROQUET CLUB, 9.30am. New members welcome. Enq. Ray Austin 0448 338 251.

YOGA AND RELAXATION, Maldon Neighbourhood Centre Hall. Evenings 6-7.30pm. Come and try, first class free. Enq: Andrea 0427 772 878.

FIRST WEDNESDAY OF THE MONTH

NUGGETTY LAND PROTECTION GROUP meeting. For further info contact Christine Fitzgerald - ckfitz5@bigpond.com - 0419 347 408.

EVERY WEDNESDAY

ATHENAEUM LIBRARY, High Street, Maldon. 2-4pm. Enqs Suzette Phillips 0429 776 893.

CANASTA for seniors 10am at Maldon Community Centre. Beginners welcome. Enquiries: Lyn 0409 566 551.

COMMUNITY LUNCH, 12 noon, Maldon Community Centre. Delicious two-course lunch. Every Wed. during school terms. All welcome. \$5. Enq: 5475 2093.

EASY STEPS TO FITNESS AEROBICS, 9am - 10am Maldon Neighbourhood Centre, beginners welcome. Starts 5 May. \$10 concession, \$15 full. Enq: Sean 0419 210 043.

HATHA YOGA WITH WENDY, 5 - 6.30pm at Maldon Neighbourhood Centre.

MALDON MEN'S SHED, 10am to 4pm at rear of Vintage Machinery Museum (accessed from Phoenix Street). All welcome. Contact Barry Murfett 0403 352 753. (Note: Closed on days of Total Fire Ban or over 38°).

MALDON MUSEUM, Shire Gardens, 11.30am - 2pm. Admission \$2.50 adults, children free.

THE MALDON VINTAGE MACHINERY & MUSEUM is a haven for machinery enthusiast's before and after the industrial revolution, but with more. Open 11am-3pm. Entry free - donations welcome. More info: Peter 0408 146 537.

YOUNG AT HEART PLAYGROUP, Maldon Neighbourhood Centre 10-11.30am. Enq. 5475 2093 or info@maldonnc.org.au.

EVERY WEDNESDAY FORTNIGHT

ART & CRAFT GROUP, 1.30pm - 4pm at Maldon Neighbourhood Centre.

EVERY FOURTH WEDNESDAY

MALDON CEMETERY FRIENDS WORKING BEE, 9.30am - 11.30am. Please come out and help get our historic cemetery clean, weed free and blooming! Our cemetery grounds and buildings need a little care and attention from some willing helpers on a regular basis. Training, equipment and morning tea provided. BYO Hat, sunscreen, insect repellent and especially gardening gloves.

EVERY THURSDAY

TAI CHI EXERCISE GROUP (CHIRP), 10.30-11.30am at Maldon Neighbourhood Centre (NB changed start time). Contact Jenny 0417 475 270 to register.

MALDON BOWLS CLUB, Bowls practice anytime Thursday until dark.

MALDON BRIDGE CLUB, 12.45pm to 4.30pm at the Maldon Hotel. New players welcome including solo players. Enq: Danny Murphy 0430 733 782.

MALDON CROQUET CLUB, 9.30am. New members welcome. Enq. Ray Austin 0448 338 251.

MALDON CHESS CLUB, 10.30am. Do you play? Come along. Do you want to learn? Come along. For enquiries contact John 0438 012 076.

OASIS KID'S CLUB, 3.20pm-4.45pm Maldon Baptist Hall, Edward Street. All primary aged children welcome. Free. Enq Gavin & Julie 5475 2338 or 0458 084 728.

SECOND THURSDAY OF EVERY MONTH

FREEMASONS MALDON meet at 7.30pm. Enq: Peter 5472 2202.

EVERY FRIDAY

ATHENAEUM LIBRARY, High Street, Maldon. 2-4pm. Enqs Suzette Phillips 0429 776 893.

CHAIR YOGA, 11am - 12 noon at Maldon Neighbourhood Centre.

COMMUNITY PANTRY Delicious home-delivered meals. Order mtalexcommunitypantry@gmail.com or phone 0472 537 866.

COMMUNITY TRANSPORT SERVICE. Book the day prior for your door-to-door service. Trips within and to Maldon & Castlemaine in the morning, fortnightly trips to Maryborough and Kangaroo Flat. Phone 5475 2093. \$3 one way, \$5 return. More info: www.maldonnc.org.au/community-bus.

MALDON MUSEUM HISTORY RESEARCH CENTRE, 10am - 1pm.

MALDON SOCIAL WALKING GROUP, Gentle walking. 9.30am meet at Maldon Neighbourhood Centre.

HATHA YOGA WITH WENDY, 9 - 10.30am at Maldon Neighbourhood Centre.

IMT - ARE WE BEING HEARD? You can listen to us on your phone you know. Listen on the TuneIn Radio App- MAINfm 94.9, or on your computer <http://mainfm.net>, OR SMS during the program on 0488 863 186. Please SIGN Your SMS.

SOCIAL GOLF - 8.30am - 9 holes, free for members or \$10 green fees. Enq: maldongolf4u@gmail.com or Gay Reid 0413 013 766.

SECOND FRIDAY OF EVERY MONTH

MALDON RSL SUB-BRANCH Monthly meeting in the Maldon RSL Hall behind the Athenaeum Library at 3pm. All Service and ex Service members are welcome to attend. No meeting in January.

LAST FRIDAY OF EVERY MONTH

MAREE EDWARDS LISTENING POSTS are postponed until further notice. My office is still available for assistance, please contact us on 5410 2444 or maree.edwards@parliament.vic.gov.au.

EVERY SATURDAY

ATHENAEUM LIBRARY, High Street, Maldon. 9.30am - noon. Enqs Suzette Phillips 0429 776 893.

MALDON MEN'S SHED, from 9am to 12pm at rear of Vintage Machinery Museum (accessed from Phoenix Street). All welcome. Contact Barry Murfett 0403 352 753. (Note: Closed on days of Total Fire Ban or over 38°).

MALDON CROQUET CLUB, 9.30am. New members welcome. Enq. Ray Austin 0448 338 251.

THE MALDON VINTAGE MACHINERY & MUSEUM is a haven for machinery enthusiast's before and after the industrial revolution, but with more. Open 10am-4pm. Entry free - donations welcome. More info: Peter 0408 146 537.

SATURDAY 26 JUNE TO FRIDAY 30 JULY

MALDON IN WINTER, more details: www.maldon.org.au/wp-content/uploads/2021/06/MiW-2021-program.pdf

MONDAY 12 JULY

THE MALDON GARDEN FLORAL ART AND CRAFT CLUB MEETING. Speaker: Ali from the Maldon Cherry Farm 2pm at the Community Centre, members bring a plate to share.

THURSDAY 15 JULY

SHAPING OUR HISTORY TOGETHER, A NARRATIVE TO STOP RACISM, series of workshops at the Maldon Neighbourhood Centre at 6.30pm. Cost \$200/\$180. Register your interest on 5475 2093.

MALDON GOLDEN MOVIES *presents: Bohemian Rhapsody*, 7.15 pm for a 7.30 start, Maldon Neighbourhood Centre, cnr of Church and Edwards Sts. Bring your smart phone to use the QR Code on the door. Enq: 5475 2093 or www.maldonnc.org.au.

MONDAY 19 JULY

THE MALDON GARDEN FLORAL ART AND CRAFT CLUB MEETING. Speaker: Greg Block Floral Art Demonstration 2pm at the Community Centre, members to bring a plate to share.

Bendigo Health Psychiatric Services Regional Triage
24 hour emergency -

1300 363 788

EMERGENCY COUNSELLING SERVICES

Kids Helpline: _____ 1800 55 1800

Lifeline (24 hours): _____ 13 11 14

Mensline Australia: _____ 1300 78 99 78

Parentline: _____ 13 22 89

Suicide Helpline: _____ 1300 651 251

Beyondblue: _____ 1300 22 4636

Dementia Friends at the Maldon Men's Shed



☆ Eleven blokes at the Maldon Men's Shed learning how to be dementia friends.

ELEVEN men came together last Wednesday at Maldon Men's Shed to watch online videos about dementia, including the challenges faced by people living with dementia and helping people living with dementia stay connected.

One of the men, a regular at the shed for years, is all too aware of the impacts of the disease—his wife died a year ago after living with dementia. Having someone with lived experience of dementia at the event provided valuable insight into supports needed

by those affected by the disease. "The main objective of men's sheds is men's health, so it was great to have this event to raise awareness of something that impacts so many," said Barry Murfett, Secretary of the Maldon Men's Shed. In 2021, there are an estimated 472,000 Australians living with dementia. Dementia is the second leading cause of death in Australia. Dementia doesn't discriminate and can impact anyone - a family member, a

neighbour, a work colleague. For people living with dementia, performing daily tasks and maintaining social networks can sometimes be challenging. This is why building communities in which people living with dementia feel understood, accepted, and included, is so important. To find out more or become a Dementia Friend visit dementiafriendly.org.au/get-involved/register. Contact Barry Murfett on 0403 352 753 for information on joining the Maldon Men's Shed.

A narrative to stop racism

SHAPING our history together is a series of workshops being run at the Maldon Neighbourhood Centre by Auntie Marilyne Nicholls and other Dja Dja Wurrung representatives, along with Emmanuelle Dubuc, founder of Mirawara Outdoor Experiences Inc.

Participants in the workshops will talk about Australia's history since colonisation, ways to reduce racism in our communities and to move towards an inclusive and resilient future.

"We will discuss life on the missions, the stolen generation, the impact of gold mining on First Nation communities and many other important topics," said Emmanuelle. "There will be a transformative workshop, to help move past the guilt and to change things for the future, as well as a walk on Mt Tarrengower."

The workshops are a response to the Statement from the Heart, where Traditional Owners across the country, are seeking a Makarrata Commission to supervise the agreement making process between government and First Nations and truth-telling about their history (Statement from the Heart, 2017). There cannot be reconciliation without acknowledging the continuing impact of colonisation on First Nation Peoples.

The first workshop took place during NAIDOC Week 2021, with the theme; *Heal Country*.

"*Heal Country* is all about truth telling and an acknowledgement of past wrongs, with a positive message about the health, wellbeing, and the future of First Nations peoples and all who call this continent home," Professor Larkin, Chairman of the Healing Foundation said.

The Healing Foundation is working towards addressing the impacts of

intergenerational trauma, and supporting the movement for intergenerational healing, by working in trauma-aware, healing-informed ways that strengthen cultural safety and connectedness.

"We know that our communities heal through culture," Professor Larkin said.

"When we are reconnected with those elements of culture that keep us safe and happy and well, we have a better chance of showing up to the world from a position of strength, and less from a position of distress or

vulnerability. "Through this, we know also that recovery is possible and that future generations can be stronger and more free, from carrying a trauma burden. There is a lot of strength and resilience in our communities to celebrate," Professor Larkin said. "It's important through NAIDOC Week and all year round that we continue to walk beside our peoples as they lead their healing journeys, and to make that effort to understand what our own role can be in supporting healing."

TUNNEL CLOSURE

Continued from page 1

works required to make sure the tunnel is restored to a level that is safe.

"While Parks Victoria will be managing the site, it is also necessary to have a local committee of management to organise and run the tours."

The Great International Quartz Mining Company began constructing the tunnel in 1882 in an attempt to drive a tunnel through Mt Tarrengower and intersect the rich gold-bearing reefs that had been mined previously from shaft-type mines on the mount.

Work was abandoned at the end of 1884, at which time the tunnel had only progressed around 600 metres. No gold-bearing rock was cut, but the tunnel gives an excellent insight into the mining techniques of the 1880s.

The tunnel was originally opened to the public in 1964 by the Maldon Progress Association, and until 2020, was run by a volunteer committee of management.

If anyone is interested in forming a committee to assist with reopening the site please contact Gab Gadsden at gab.gadsden@delwp.vic.gov.au.

Letter to the Editor

Why Can't?

When I had my sister Liz Buller in the car and she wanted to do shopping herself, parking was a problem. No one wants to step down into the deep gutters, or step over them.

I often thought, why couldn't the walk-overs be reversed?

Why can't the council put sensible four metre wide walk-overs in front of ALL shop doorways? There would be plenty of gaps

left for maintenance when needed.

We would not have to use only one crossing that isn't wide enough anyway, and sometimes too far away.

More seats would be nice for those of us who are older or anyone unwell, when we meet a friend and would like to chat for a few minutes.

Gardens and gardeners could stay out of the street, and have four more parking spaces.

Margery C.

Maryborough Joins Loddon Orange Door Network

MINISTER for Prevention of Family Violence Gabrielle Williams on Tuesday announced Maryborough and District Hospital will be providing Orange Door services from September.

Orange Door brings together workers from specialist family violence, child and family, Aboriginal and men's services to provide help and support for people experiencing family violence and for parents and carers needing support with the wellbeing and development

of children and young people. The State Government has partnered with Anglicare Victoria, Bendigo and District Aboriginal Cooperative, Centre for Non-Violence and Njernda Aboriginal Corporation to deliver the Orange Door network in Loddon, which opened in October 2020.

The network has provided a response for more than 6000 Victorians, including more than 2000 children in the first eight months of

operation. "The expansion of the Loddon Orange Door Network will provide much needed family violence and wellbeing support for families across the region, closer to home," said Maree Edwards, MP for Bendigo West.

The Orange Door is a free service and can be contacted on 1800 512 359 or via loddon@orangedoor.vic.gov.au from 9am to 5pm Monday to Friday (excluding public holidays). For more information, visit: orangedoor.vic.gov.au.

For 24/7 family violence help and support, contact Safe Steps on 1800 015 188 or webchat safesteps.org.au/ chat Monday to Friday, 9am to 9pm. Anyone concerned about their own behaviour can contact the Men's Referral Service on 1300 766 491.

STEVE BARTY GAS

Proudly servicing Maldon and surrounding districts in:
**Domestic LPG deliveries • LPG appliances
Forklift gas • Industrial and hospitality gases
BP oils and greases**
For all your LPG needs, contact Steve Barty
5472 1262 OR 0417 524 713

Correction

In last week's article Newstead Men's Shed celebrates eleven year anniversary the man on the right is Eric Staley, not Norm Rutherford. Apologies Eric.

MALDON *Quality* BUTCHERS

**Locally farmed
bio-dynamic beef &
lamb
Free local delivery**

19 Main St. Ph. 5475 2271

Meat voucher is on hold until further notice.

Maldon In Winter

Shop Window Competition

Vote now for your favourite shop window!

Please cut out and drop into Maldon Newsagency

People's Choice Award

Shop Name:

Shop Address:

The People's Choice Award will be announced on the weekend of 10-11 July.

DANCING CANDY CANES



☆ Stephen pouring drinks for the crowd at 48 Main.



☆ Maree from Poppy's of Maldon with her beautiful selection of clothing.



☆ Jessie serving dinner at Le Sel.



☆ Adam, enjoying the late night shopping at Much Ado.



☆ The Substitutes playing at the Maldon Machinery Museum.

During these difficult times...



We are still here to help you, 24 hours a day, every day

mount alexander FUNERALS

12 Campbell Street, Castlemaine
Ph 5470 5951 all hours
www.mafunerals.com.au

The Maldon Market continues in COVID Safe Mode



☆ Market goers waiting for their coffee at last months market.

CENTRAL Victoria's favourite Hand Made and Home Grown Market has everything lined up for a spectacular Mid Winter market 9am - 1.30pm on Sunday 11 July at our new COVID Safe home at the picturesque Bill Woodfull Recreation Reserve, Francis St Maldon.

Market Manager Chris Hain said, "We are looking forward to a fabulous

market this Sunday. It's well and truly the middle of winter but what better way to warm up than a leisurely stroll around the oval with a hot coffee and a pastry or a pie. You'll be able to find a great range of winter wool-lies if you need to enhance your winter wardrobe and there's a wide range of fine local food and wine and of course there's always an impressive array of artisan

crafted goods for all tastes. There'll be live music to keep you entertained while you pick up some fresh cut flowers, plants and seedlings, jewellery, ceramics, woodcraft, garden decorations and a whole lot more. We look forward to hosting all of our loyal regulars and

many new visitors."

The Market is Operating under strict COVIDSafe conditions as laid out by DHHS.

- Be mindful; Check in with the QR Code at the Entrance gates
- Keep 1.5m distance at all times – especially when queuing
- Sanitise on the way in, after each purchase and on the way out
- Use card payments where possible
- Do not touch produce or products until you have purchased
- Limit the size of your shopping party if you can
- Drink your coffee and eat your hot food away from the market area
- Keep dogs on a short tight leash at all times. We hope you will join us.



☆ Amy and Ken selling delicious bread at the June market.

MALDON MARKET
Hand Made • Home Grown
Second Sunday of every month
Next Market 11 July
9 - 1.30pm
Facebook.com/maldonmarket
www.maldonnc.org.au

OLIVET CHRISTIAN COLLEGE

Prep – Primary – Secondary (Est 1979)



- Our class sizes are small
- Our teacher support is high
- We know our students
- Christian by name and by nature
- Foundation – Year 10



School bus is now running daily to MALDON

89 Main Road, Campbells Creek (near Castlemaine) | Phone 5472 3817 | Email admin@olivet.vic.edu.au | Principal: Mr Steven Nicholas

www.olivet.vic.edu.au



☆ Arrayah Loynd.

Sitting in my study looking out on where one day there may be a fence, I had the pleasure of a phone interview with Arrayah Loynd, a photographic artist, of whom Simon Dow has said, “EDGE is proud to introduce the work of Arrayah Loynd to the gallery, continuing our commitment to presenting

powerful photographic work in ways that invite discourse not just about the image, but also the depth of thinking behind the making of the image.” Arrayah has some very strong views about the position of women in society. Her views are perfectly summed up in a Khmer Proverb: ‘a woman is like white cloth, once soiled, it

can be washed but never be made clean again. A man is like gold, once soiled, it can be washed and shines like new again’.

Those profound words give you deep insight to where she is coming from, and what motivates her art, which though photographically based, is much more than that. She is very much in tune with young Gen Z women who no longer accept the archaic attitudes that were around when, as a member of the so called *Silent Generation*, I grew up with, in particular, the construct of shame in relation to women’s bodies.

She says that shame is a construct created to disempower women over the centuries. In fact in 1972, John Berger wrote in *Ways of Seeing*, ‘that looking is a political act, perhaps even a historically constructed process – such that *where and when* we see something will affect *what* we see – which focused on the male gaze. Berger showed

More or less (in)complete

the continuities between post-Renaissance European paintings of women and imagery from latter-day posters and girly magazines, by juxtaposing the different images – showing how they similarly rendered women as objects.’

Without being aware of this, Arrayah’s approach to her subject matter is very critical of that outdated concept. In fact it is diametrically opposed to the old ‘ways of seeing’. Her work is that of a committed feminist based on her theme, using self-portraits, and the ‘difficult’ series that will be shown in the small side gallery, is of other women, to embody her ideas, which are deeply personal. Her commitment to social commentary through her work is powerful and insightful.

She strongly supports the need for women to have autonomy over their bodies. She says that sexual and verbal assault never leaves you. The censorship on social media, bans images of breast-feeding women, while there is a double standard in relation to more sexual images. In her work Arrayah explores contemporary concepts of women, including the impact on



☆ All that’s required is your silence?

their bodies from sexual and verbal abuse

Arrayah trained as a photographer at the Northern Metropolitan Institute of Technology (NMIT) and has since lectured at Melbourne Polytechnic and RMIT. In this exhibition Arrayah is experimenting with digital art and paint.

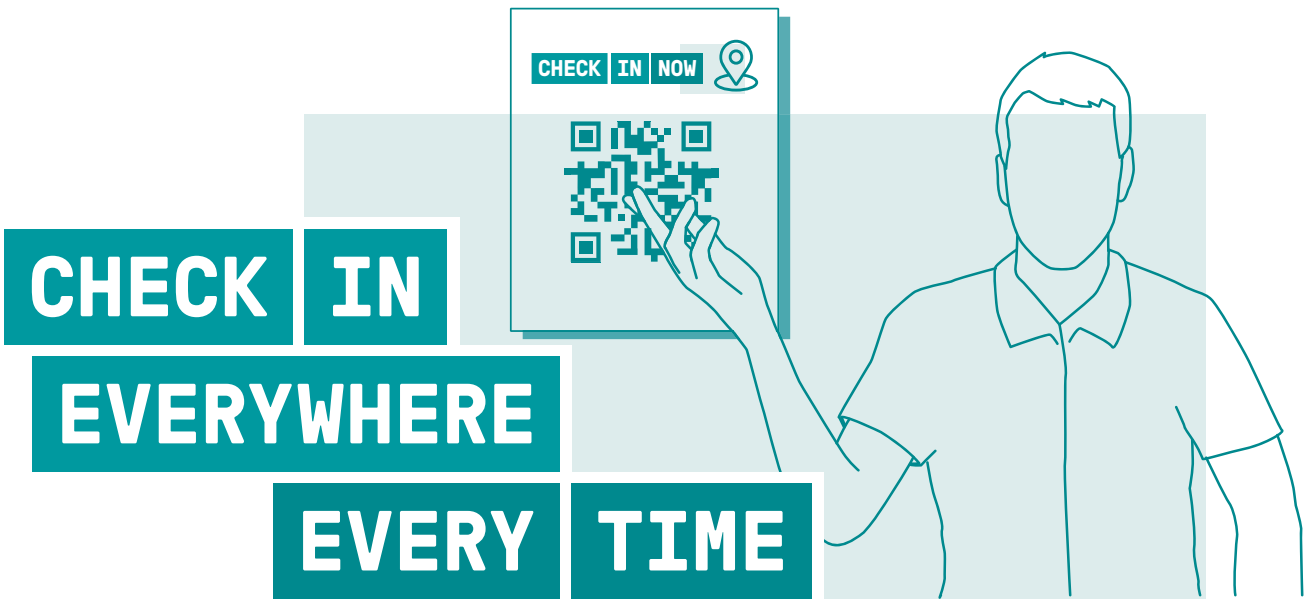
EDGE Gallery Director Simon Dow said, “Please help us to celebrate this artist and come to mingle with old

friends or meet new ones at the opening of this exhibition on Saturday July 10 from 4-6pm.”

The exhibition runs from July 10 - August 15. You’ll find EDGE at 35-37 Main Street, Maldon.

PLEASE RSVP to 0400 337 301 to book for the opening.

For further information contact: www.edgegalleries.com, or visit: arrayahloynd.com or Insta - @arrayahloyndphotographer.



Victoria, every one of us needs to check in, everywhere, every time.

Checking in helps us stop the spread of coronavirus, and protects our businesses, our communities and each other.

So, let’s all check in. Everyone. Everywhere. Every time.

For more information visit CORONAVIRUS.vic.gov.au

Authorised by the Victorian Government, 1 Treasury Place, Melbourne





97 High Street, Maldon. Enqs Joy 5475 1326.
Every Mon, Wed & Friday 2-4pm. Saturday 9.30am - 12 noon.

Books for the fireside

To celebrate Naidoc Week this past week, the Maldon Athenaeum Library has had a display of relevant books for people to browse or borrow.

This week there are a couple of thrillers for those who lap up this genre and certainly many of our readers seem not to get enough of the books that offer thrills

and rather scary plots. Firstly though, I want to tell you about a very unusual and quite special biography.

I Am I Am I Am is by well known and respected author Maggie O'Farrell. O'Farrell who has written a number of books and quite a few of them such as **Instructions For A Heatwave**, **The Distance Between Us**,

The Hand That First Held Mine and The Vanishing Act of Esme Lennox are all available at the Athenaeum Library. This current book is an amazing memoir of O'Farrell's life in which she recounts the numerous times when she's narrowly escaped death. The incidents aren't in chronological order but in reality start when just a child she develops a very serious brain disorder which almost kills her and leaves her with severe problems. You may think that this is a depressing subject but I thought that this book was marvellously interesting and so well written that I simply couldn't put it down.

The Chosen Dead is by Matthew (M.R.) Hall and is the fifth book in **The Coroner** series. These books are not detectives or thrillers but will be found in the General Fiction genre as the plots are complicated and far reaching. This one is so complicated that at times I had to put it down and go away and have a think about the different strands. It is

fascinating and certainly well written as are all the others in the series. Jenny Cooper, the coroner has almost overcome her health problems in this book but there are times when she feels pushed over the edge. There are sinister scientific overtones that cross countries and philosophies.

Red Strike by Chris Ryan was published in 2019 and a thriller that has a focus that centres on the struggle for supremacy between Russia and the West. It's the story of a Russian who defects to the West and goes into hiding only to be found a few weeks later still alive but poisoned with a lethal nerve agent. Further drama is unfolded as the weeks and months roll on. Two British agents are drafted to MI6 and even they find themselves caught up in a terrifying conspiracy. I'm sure that true spy and thriller lovers will really enjoy this terrible tale.

A Quiet Flame is written by Philip Kerr and is a Bernie Gunther thriller. Set in Argentina in 1950 Gunther

arrives to find that a young girl has been murdered in circumstances similar to his last case in Berlin where he was a homicide detective. The local police are convinced that the killer of this current murder is to

be found among the many thousand ex-Nazis who have come to Argentina since 1945. They enlist Bernie Gunther to help find him.

Enjoy your fireside reading.

Joy Leneaux-Gale.

MALDON BRIDGE CLUB RESULTS

Blitzing the field



WE all know what 'blitzing the field' represents as we have seen it recently in the football results. Many field blitzes happen quite often on the race track with horses leaving the field in their 'wake' but not seen that

often at the Bridge tables.

We experienced this week a 'blitzing of the field' by two very astute players who, I believe may well have achieved a record in the longest winning margin! Twenty-five 'lengths', or points as we know it, was the amazing result when winners were announced.

Now, just who were these two very 'switched on' players who managed to make the game of bridge seem relatively easy? We welcomed back Gretchen who had been absent for a few weeks and her drawn partner was Ken. Ken has had quite a few wins this year with various partners and reads the cards very well. Partnered with Gretchen, who is a very experienced player, the odds would surely have been very short on their winning on the day?

Play ended, the scores were compiled by Danny, Jo and Werner, and the results were announced. In first place with a margin that would possibly not be achieved again for some time to come were Gretchen and Ken with 94 points. Congratulations on a great result.

The rest of the placings were quite close with second place going to Aileen and Werner with 69 points. The team of three of Mark, Louise and Lillian were third with 64 points.

Maldon Elizabeth and Castlemaine Jan were third with 62 points followed by Sandy and Maldon Jo in fifth place with 58 points. Well done to everyone.

As always, the afternoon tea break is most welcome and gives great respite during the afternoon to assist in keeping the mind focused for the balance of play. Thank you to the Maldon Hotel team once again.

Whatever your age group or skills, please feel free to join us to, 'dip your toe in the water' each Thursday from 12.45pm to 4.30pm or on Mondays 1.15pm to 4.30pm to help us in our endeavour to:

USE IT OR LOSE IT

Judy McKnight

In Maldon Today



TODAY Alison and EC meet Ed Carthew to discuss real estate, the newish business and the housing boom in regional Victoria as it is affecting Maldon and surrounds.

Last week Kev and Nancy were heart warmed on a cold damp day by Clancy McLeod (pictured) playing his classical guitar. Clancy has recently returned

to Maldon, after being on a student exchange from the Melbourne Conservatorium of Music, for a year at the Royal Conservatoire of Scotland. They explored Clancy's motivation, ideas and goals, as well as the unfortunate effects of COVID and Spotify on musicians. They were delighted by a particularly exquisite rendition of Neil Gow's lament on the death of his second wife, which Clancy also played at his recent concert at the EDGE Gallery in Main Street.

Next week's program will feature a hunt for the collective noun for Editors, as Nancy and Mike – both former *Tarrangower Times* editors – host Jade Jungwirth, the latest occupant of that position. Expect puns, split infinitives and dangling participles to be on the agenda.

To catch up on our previous programs click on <https://www.mixcloud.com/nancymay007/>.

Mike Smythe

MALDON GOLDEN MOVIES (MGM) IS ON THE MOVE!



MALDON'S own Film Society, famous for offering the best movie membership deal in Australia, is heading downtown.

We're shifting our monthly film venue from the Neighbourhood Centre to the Band Room in The Maldon Community Centre

in Francis Street, as of 15 July. The move is for purely technical reasons to do with a greater ease of setting-up and taking-down of equipment. Financially and in great friendship we remain part of the Maldon Neighbourhood Centre, but now we're also welcomed at the Community Centre.

We've been delighting Maldon now for seven years and we will continue to do so. We offer 11 great movies a year for an annual membership fee of \$25.

At a trial movie night in the Band Hall recently the committee all agreed that the move does make things easier, technically. Thus from the July movie on, MGM screenings will be in the Band Hall at the usual 7.15pm for a 7.30pm start.

The first film in the new hall on **15 July** will be *Bohemian Rhapsody*. Released in 2018, it tells the story of the legendary British band Queen and lead singer Freddie Mercury, leading up to their famous performance at the 1985 Live Aid concert. It's a crackerjack choice to get us off to a flying start!

A free glass of prosecco and finger-food is offered to all members who help us celebrate our branching out into the new venue. We'll also hand a glass of bubbly to every friend you bring along to join MGM. You can check out details of the monthly movie on the third Thursday of each month in the *Tarrangower Times* or ring Ines on 0421 909 835 for further membership information.

Nancy Whittaker,
MGM Secretary,
Maldon Golden Movies

Shop 2, 133 Mollison St, Bendigo
Shop 13, Killians Walk, Bendigo

Peter Gallivan
Locksmith & Proprietor

• Safe sales
• Scissors sharpened
• Knife sharpening
• Keys cut - all types
• Master key systems
• Keys cut to code numbers
• Deadlocks supplied and fitted

E: benlock@netcon.net.au
Ph 03 5443 7227
Fax 03 5441 7099



On Thursday, 16 August, 1945 the Maldon Urban Fire Brigade took delivery of a new firefighting unit. The delivery coincided with celebrations for the end of the War in the Pacific and so the official handover was delayed until after the town's thanksgiving service was held.

Thompson's Foundry in Castlemaine had constructed the unit that consisted of a copy of an American Darley pump front-mounted on a Ford V-8 one-ton truck. It was the first of 30 similar units Thompson's planned to produce. The truck was fitted with three hoses along its sides and a ladder above it. The cabin provided the driver with 'sedan comfort' and the pump could deliver 330 gallons of water per minute.

On its arrival a series of demonstrations were conducted. The first took place in Fountain Street from a hydrant near the old Fire Station. The pump boosted the height of the water flow by at least 20 feet. Later a demonstration was conducted at a dam in Long Gully. There two hoses were attached to the pump and each sent a stream of water over the road and power lines to land over 70 yards away.

Following the demonstrations a luncheon was held at Boreham's Café in Main Street. The seating capacity of the venue was taxed to its upmost as representatives of the newly formed Country Fire Authority and many neighbouring fire brigades attended.

After the usual toasts, ex-Captain and current Secretary of the Maldon Brigade, John Huish, proposed the toast to the Country Fire Board, which he said was a great organization dedicated to supporting local brigades. Responding on behalf of the Board, Edwin Buckland said preparations to combat the ravages of bush fires were well advanced. He also said much credit must be given to the State Government, who had responded to the 1939 fires with a whole of State approach.

During the luncheon several returned servicemen, who were present, were acknowledged, including Jim McKnight who had just returned home after several years as a POW in Europe.

Finally the CFA's Chief Officer Alex McPherson officially handed over the firefighting unit to the Maldon Brigade. McPherson said that Maldon had received the first such unit because of the great service local Captain Harry Grigg had given to the State's fire brigades.

Harry Grigg, who was not only Brigade Captain but also the Maldon Shire President and a CFA board member, said the occasion was one of the proudest of his life. He accepted the engine on behalf of both the Brigade and the ratepayers of Maldon.

This information and photo was supplied by the Maldon Museum and Archives.

OPEN FOR INSPECTION: SATURDAY 2:00PM-2:30PM



Daylesford

35 Vincent Street North

\$950,000

LAND OF OPPORTUNITY IN THE HEART OF DAYLESFORD - 1800S COTTAGE WITH A HUGE 3,223M2

3 1 2

Located an easy 800m stroll to Daylesford’s thriving town centre on Vincent Street, this 1800s timber cottage offers a renovation opportunity with so much land in a picturesque garden setting.

Positioned at the front of the lot with an iron lacework verandah, Baltic floors and tall ceilings, the 1860s 3 bedroom miners cottage has had new stumping and plastering, much rewiring and replumbing, and is ready for cosmetic touches to complete the renovation or embark on your own grand design project.

The grounds offer an old world setting with shade trees, fruit trees and a semi-rural feel in the heart of Daylesford.

With all town services, easy access off a service road and a deep garden, the property offers a great subdivision opportunity STCA.

OPEN FOR INSPECTION: SATURDAY 11:30AM-12:00PM



Campbells Creek

7 Roalies Place

\$795,000 - \$815,000

INVITINGLY SPACIOUS, QUALITY ECO TOWNHOUSE CUL-DE-SAC LOCATION WITH EASY GARDENS!

3 2 2

This is the ultimate in low maintenance modern-style living. Invitingly spacious, with 3 bedrooms, this chic ecologically built townhouse revels in high quality bespoke finishes. Designed for easy living & relaxed entertaining, this beautiful, modern home features double glazed windows, square set cornices and a tall raked ceiling within a large open plan living-dining-kitchen zone. The home has 3 double bedrooms with robes - main with walk-in robe and ensuite bathroom, a wide entry vestibule, double garage with direct entry, oversize living zone with quality kitchen and east facing glass doors that open to a private courtyard. Large laundry with storage and separate bathroom including a bath. A verandah-patio overlooks the drought tolerant rear garden that includes rear Laneway access. Fitted with back to grid solar, this quality home is ready to enjoy and easy care lifestyle in stylish surrounds.

INSPECT BY APPOINTMENT



Castlemaine

11-13 Lyttleton Street

Contact Agent

HEAVENLY TRIO : PRESBYTERIAN CHURCHES WITH A MANSE RESIDENCE CIRCA 1856 - 1894 CASTLEMAINE TOWN CENTRE WITH VIEWS!

3 2 6

Offers a heavenly trio of historic Buildings in the commercial heart of Castlemaine, positioned on 2,023m2 (0.50 Acre in 2 titles) in central Lyttleton Street, adjacent to the Art Gallery and just 1 block from the Train Station. These historic, flexible combination of buildings constructed in the heyday of goldrush times, are Zoned General Residential with heritage overlays, and they comprise of:

- 1894 BEAUTIFUL LARGE BRICK CHURCH BUILDING (332m2)
- 1856 ORIGINAL CHURCH HALL BUILDING (183m2)
- 1861 BRICK MANSE HOMESTEAD (156m2)

OPEN FOR INSPECTION: SATURDAY 11:45-12:15PM



Faraday

459 Golden Point Road

\$540,000 - \$560,000

FABULOUS FARADAY FARMLLET OFFERS A GOLDEN SETTING - 7.8 HA (19.26 ACRES) NEARBY TO THE CHEWTON RESERVOIR AND BUSHLANDS!

3 1 2

Positioned on a rolling hillside in Faraday with 7.8 hectares of grazing and established native trees, this terrific property features a sizeable dam, shedding and a 3 bedroom home. The house features 3 double bedrooms two with built in robes, a living area with Osburn wood heater and split system air conditioner. There is an electric kitchen with dishwasher and adjacent dining space looking over the covered rear deck. The bathroom has a cubicle shower, vanity, and toilet. The large laundry contains an additional toilet and linen cupboard. Surrounds include shade trees, water tanks, double garage with power and concrete floor, and further shedding. This charming rural getaway is just 11km from Castlemaine with its shopping hub, and city commuter train line, and an easy commute into Bendigo via the Calder Freeway.



Rob Waller

Director/Sales

rob@wallerrealty.com.au

0418 571 130



Narelle Waller

Director/Leasing

narelle@wallerrealty.com.au

0408 571 131



Blasi Mulholland

Senior Asset Manager

blasi@wallerrealty.com.au

0417 311 733



Kirsty Mulholland

Assistant Property Manager

rentals@wallerrealty.com.au

03 5475 1055

TT Dine Out Directory

BERRYMAN'S CAFÉ & TEA ROOMS - MALDON

30 Main Street - 5475 2904
Open 7 days
Full menu is available to take away.
We also have some individual home-made frozen meals and we will soon be offering them in family size portions.

DIG CAFE - NEWSTEAD

13 Lyons Street - 5476 2744
Well known, well loved cafe with excellent food and coffee, fully licensed. Open 8.30am until 3.30pm each day and Friday nights for takeaway pizza from 5pm until 8pm. Bookings advisable at present on 5476 2744. www.digcafe.com.au

MALDON ROSE CAFE - MALDON

6 Main Street
(formerly Zen Cafe)
Everything baked on premise.
All Press coffee, Harney & Sons tea.
High teas available.
Open 10am - 4pm Saturday & Sunday.

MALDON TAKEAWAY - MALDON

10 Main Street - 0476 887 062
Open 11am-7ish every day.
Fish and Chips, burgers, hot dogs,
loaded fries, souvlakies, pizza, coffee
and happy to be here service.



BULL & MOUTH HOTEL - MARYBOROUGH

119 High Street - 5461 3636
Open for Breakfast, Lunch and afternoon tea
Sunday - Tuesday 9am - 5pm and
Breakfast, lunch, afternoon tea and dinner
Wednesday - Saturday 9am - 10pm.



GOLD EXCHANGE CAFE - MALDON

46 Main Street - 0439 368 077
Open 7 days
Limited dine-in and takeaway.
Monday-Friday from 6.45am-3pm and
Saturday and Sunday from 7.30am-3pm.

MALDON HOTEL - MALDON

58 Main Street - 5475 2231
OPENING HOURS
Monday & Tuesday: 4pm
Wednesday - Sunday: Midday
Lunch Specials: Wednesday - Friday
Meat Tray Raffle: Friday nights

NEW BOOTS CAFE - NEWSTEAD

16 Lyons Street - 0492 867 319
Great menu - excellent Allpress coffee
Golden North award winning ice-cream
Open Thursday - Sunday 8.30am - 4pm
Bookings advisable



CAFÉ MALDON - MALDON

52 Main Street - 5475 2022
Open 7 days.
Open for takeaways only
Monday-Friday from 7.15am-2pm and
Saturday and Sunday from 8am-3pm.
<https://order.hungryhungry.com/cafemaldon/menu>

KANGAROO HOTEL - MALDON

89 High Street - 5475 2214
Bookings Advisable
Open Tues & Thurs 4pm - Close. Dinner only
Closed Mon. *Tight ass Tues evening - \$15 meals.
Wed, Fri, Sat & Sun 12pm - Close. Lunch & Dinner.
Takeaway - Fish & Chips or Parma Tues - Sun.

Le Sel DELI - MALDON

12 Main Street - 0417 329 776
Open for dine-in from Mon -Thurs from 9am-3pm
and Fri, Sat and Sun from 9am-5pm.
Sat night dinner bistro from 6.30pm to 10.30pm.
Takeaway breakfast, lunch & dinner also available.
Bookings are essential for the bistro.

RAILWAY HOTEL - CASTLEMAINE

65 Gingell Street - 5472 1250
Great food, both traditional pub food and gourmet.
Daily specials.
Open 7 days a week for dinner and lunch on
weekends. Phone : 5472 1250 for bookings.

Health & Fitness Directory



WINTER IS HERE - A GREAT TIME TO GET YOUR BIKE SERVICED

51 Templeton Street,
Castlemaine
Ph: 5470 6333

(Mention this ad and we will donate \$10 from the service fee to the
MALDON, MURRAY TO MOYNE cycling team, in support of the MALDON
HOSPITAL)



MALDON GOLF CLUB

GOLF LESSONS – on demand - all standards - clubs available
SOCIAL GOLF – 9am Monday and Friday. Ring to check times -
9 holes, free for members or \$10 green fees
RECREATIONAL - exercise and dog walking memberships available.
Enq: maldongolf4u@gmail.com or Gay Reid 0413 013 766.



MALDON CROQUET CLUB

(Established 1925)

Francis Street Maldon

Social Croquet every Tuesday, Thursday and Saturday from 9.30am
and Tuesday evening from 7pm.

New players always welcome to come and give it a try. Equipment supplied.
Also open to young players, Working With Children certificated members to help with
learning and coaching available. Weekly green fees \$5.
Enquiries: Ray Austin 0448 338 251.



KEYSTONE PILATES

Keystone Pilates provides a safe friendly environment where people of all
ages and abilities can work on their strength, flexibility and balance.

CALL FOR A FREE ONLINE TRIAL

The Faulder Watson Hall, Barker Street, Castlemaine
Contact Lloyd 0421 329 895



MALDON FOOTBALL NETBALL CLUB Committee 2019/2020

Executives:

President	Jamie Cox	0429 477 223
Vice President	Nick Kinross	0439 114 099
Secretary	Luke Cox	0438 058 665
Treasurer	Kyle Winstanley	0402 618 123
General committee members: Coby Cox, Simon Cox, Eddie Peaslee, Luke Dyer, Kirsten Cain, Georgia Spokes, Ross Eggleton, Steve Webb		



TREAD PODIATRY

Providing superior foot care to those in need.

- Foot & ankle pain • Orthotics • Children's feet • Wound care
- Nail surgery • Sporting injuries • Diabetic foot health
- Gait analysis • General footcare

255 Barker Street, Castlemaine. Ph: 5472 3295



ROBERT COX MOTORS HIGH STREET, MALDON, 3463

Robert Cox

SPECIALISING IN MECHANICAL REPAIRS

- Lubrication Service • Smash Repairs • Tyres
- Windscreen Replacement • Batteries • Parts
- Disc and Drum Brake Machining
- Wheel Alignments

* LICENSED MOTOR VEHICLE TESTER *

TELEPHONE 03 5475 2381



BRACKEN LAWYERS

A boutique legal practice specialising in:

- Conveyancing • Property Law
- Commercial Leases • Guarantee and Loan advice
- Business Sale and Purchases

**Based in 'The Hub' 3/233 Barker Street, Castlemaine
and servicing Maldon by appointment.**

Phone 5470 5062 or email ian@brackenlawyers.com
www.brackenlawyers.com

CASTLEMAINE FINANCIAL SERVICES

- Accounting & Taxation
- Business Services
- Financial Planning
- SMSF Advice

12 Mostyn Street, Castlemaine. Phone: 5470 6100

Tree works start soon

AS part of Mount Alexander Shire Council’s annual tree management program, pruning is set to commence shortly and will occur on street trees in Castlemaine and Maldon, and in several parks and reserves.

Street tree pruning will occur throughout Maldon and in the central areas of Castlemaine. Priority areas in Castlemaine include:

- Barker Street (between Dudley Street and Forest Street), Castlemaine
- Templeton Street (between Hargraves Street and Kennedy Street), Castlemaine
- Parker Street (between Barker Street and Kennedy Street), Castlemaine
- Kaweka Street,

Castlemaine Parks and council properties identified for major works include:

- Castlemaine Botanical Gardens
- Western Reserve, Castlemaine
- Campbells Creek Community Park
- Bill Woodfull Recreation Reserve, Maldon
- Maldon Public Gardens
- Stanley Park North, Harcourt

The works will remove dead wood from trees, reduce and remove hazardous branches and maintain appropriate clearances from roads, footpaths, street lights and signs.

The trees identified for maintenance are based on a proactive assessment by Council’s Tree Management

Officer to maintain tree amenity, health and safety.

All tree works will be carried out by qualified arborists in line with Australian Standards.

Every effort will be made to retain tree shape and character. Trees on private property will not be pruned.

The street tree maintenance program is expected to have minimal impact on the community. Please adhere to traffic management plans in place to help ensure safe speed zones of 40km/h while works are underway.

The tree pruning program will start in July and is expected to be completed by November. The works are separate to the annual powerline clearance program.

Know Your Local

Kate Gamble



ONE of the misconceptions of Maldon Inc., according to its president Kate Gamble, is that the association is focussed on everything related to the Maldon community. In fact, it is a small volunteer association comprising local business owners.

“It’s really a traders association,” said Kate. “Recently we’ve received funding from Business Victoria which has allowed us to get professional photographs of the 70 or so members to be used for a website we’re in the process of putting together.”

Kate owns two short-term accommodations: the Shopkeeper’s Quarters near the old railway station in Maldon, and a cottage in Castlemaine.

“It’s been a lot of work, especially the Maldon property, which I bought in 2014. It took nearly two years to rebuild.”

Kate has had a diverse career. She studied landscape architecture and was a lecturer at Melbourne

University for 15 years. Kate occasionally writes articles for Landscape Architecture Australia and has previously worked in administration and event organisation.

Kate now lives full-time in her cosy miners cottage in Maldon while her husband lives part-time in Melbourne, where he works for St Vincent’s Foundation.

“We kept an eye on the evolving situation with COVID and decided it was best for my husband to come up here during lockdown. It was hard—my businesses were closed for nearly a year, which was very costly,” said Kate.

“Rural businesses are picking up now, and while it’s great to be busy, a lot of businesses are struggling with supply and staffing issues.”

As Kate and I sit at Maldon Rose, eating delicious petit fours and drinking coffee, Kate sadly discusses the recent death of her 11-year-old ginger cat Lennie, who has left behind his friend and companion,

nine-year-old Burmese Fat Tony.

Over the years, Kate has travelled to Africa, Europe, Asia and the Middle East, and very fortunately, before COVID hit, a trip in 2019 to Canada and New York.

I asked where she was dreaming of travelling next when able and she laughed and said, “Anywhere!”

A regular customer at the Wool Stash in Maldon and Zigo Zago in Castlemaine, Kate describes a beautiful inky blue and beige blanket she crocheted after her father died.

“It was a form of therapy and helped me to survive it,” she said. “Although it’s still not finished; there’s two pieces I need to sew together.

“I also used to sew, and one day I showed a friend a denim jacket and skirt I’d made. Later, the friend told me she thought I’d lied about making it,” Kate laughed. “I don’t think she truly believed me until she saw the scraps of material.”

Jade Jungwirth

Disability worker registration giving regional Victorians a safe choice



☆ New safeguards for Victorians with a disability.

DISABILITY worker registration is a key part of the Disability Worker Regulation Scheme – a new set of regulations to strengthen protections for Victorians with disability and ensure the quality of the disability workforce.

The first scheme of its kind in Australia, voluntary disability worker registration opened on 1 July to allow workers to be independently assessed by the Disability Worker Registration Board of Victoria.

Across the disability sector, different checks, standards and screenings in place for disability workers

may vary in consistency, or may not exist in some cases. Registration fills a critical gap by ensuring registered disability workers meet rigorous standards and are assessed for safety, skills and professionalism, no matter how they are employed or how the services they deliver are funded.

People with a disability and their carers will be able to easily check if a disability worker is registered through a public list on the Victorian Disability Worker Commission website.

The new safeguards were established in response to recommendations of the

Victorian Parliament’s 2016 Inquiry into abuse in disability services which evidenced alarming abuse and neglect of Victorians with disability, including in regional areas. The launch of worker registration also shadows the current Royal Commission into Violence, Abuse, Neglect and Exploitation of People with Disability, which has heard cases of the disturbing mistreatment of regional Victorians with a disability.

“For someone living with disability, knowing their worker is registered provides confidence they have the right skills to deliver high quality services,” said Melanie Eagle, Chair of the Disability Worker Registration Board of Victoria.

“Registration supports increased professionalisation in disability work and for people seeking services to find workers they know have been independently assessed as safe, skilled and professional.”

Disability workers can apply to register at vdwc.vic.gov.au.

MUCH ADO

GENERAL STORE. MALDON

22 Main Street

Our beautiful new olive oil decanters have arrived instore - made of stainless steel + with a sleek design
Mon - Wed 10am-3pm
Thurs - Sun 10am-4pm



Shop Online: www.muchado.com.au
Follow Us: @muchadomaldon
Email: info@muchado.com.au
Call 03 5475 1005

THE LAST HURRAH

Original Funerals for Unique People

Have a funeral that actually reflects the life of the person you have loved and lost. We bring YES energy to funeral planning, and offer kind-hearted, professional, and authentic care at a reasonable price.



www.lasthurrahfunerals.com.au
0430 378 388

MALDON



GROCERIES OPEN

Mon-Sat: 7.30am - 7pm
Sun: 9am-5.30pm

LIQUOR OPEN

Mon-Thurs: 9am - 7pm
Fri-Sat: 9am - 7.30pm
Sun: 9am-5.30pm

SPECIALS

from Wednesday 7th July to Tuesday 13th July

Australia Scotch Beef
Fillet Steak \$38.99 kg

Carlton Dry or Furphy
Lager \$47.00 ea

Australia Loose Navel
Oranges \$2.49 kg

Great Northern Super
Crisp Lager \$49.00 ea
30 can Block

11-17 Main Street Maldon.
Ph: 5475 2458

ARBORIST

Arborea
Tree Management
Consulting Arborist
Contract Climber • Tree Pruning & Removals • Cable Bracing & Risk Assessment • Mulching & Stump Grinding • Tree Maintenance & Protection • All Tree Works
Fully insured
Reubin Williams
0439 326 113

BUILDING DESIGNER

BUILDING DESIGNER
Maldon Based

*Home Design
Planning Applications
BAL Assessment
Project Management*
0402532082
eric@s3design.eco

CABINET MAKER

CABINET MAKING & INTERIORS
Custom-made fitted and free-standing furniture
Kitchens, kitchen renovations, wardrobes, vanities, bookcases etc.
Repairs and restorations
No job too small
Martin Waddington
Ph: 0423 405 863
Email: mwaddington70@gmail.com

CABINET MAKER

JOINERY & HANDYMAN
All Woodwork Jobs
Interior & Exterior.
Maldon and surrounds.
No job too small.
Free quotes.
Nick Pierce
Ph. 0491 115 459

CARPENTER


Local Registered Builder.
Renovations and New Builds.

CONCRETER

CONCRETER
PAT COLLINS
PATHS, SHEDS, FLOORS, DRIVEWAYS, PATTERN, COLOUR
PAVING ALSO BRICK PAVING
Shelbourne Road
Maldon
Ph. (03) 5475 1080

DRESSMAKER

DRESSMAKER / TAILORESS
Alterations & repairs.
Experienced and reliable.
Maldon based.
Very reasonable rates.
Phone: 5475 2952
or 0448 510 103

ELECTRICAL

Cainpower
Bernie Cain
Your Trusted Local
Electrical Contractor
Rec 8335
Maldon & Surrounds
0417 526 308

ELECTRICAL


Servicing Goldfields Area
All jobs big or small
Call Simon on
0408 314 662
sgs.sparky@gmail.com
Rec 19673

ELECTRICAL

Ian Cain Electrical
Rec No 13585

Domestic, industrial, commercial, farming,
emergency call out on request
Carisbrook
Phone/Fax **5464 1402**
Mobile **0418 388 226**
ices@westnet.com.au

FLOORING

TRUE BLUE FLOORS
• Sanding & Polishing Specialists
• New & Old Floors
• Free Quotes
For Quality Workmanship
Ph: RIC LANG
0417 110 922
MALDON

FRAMEMAKER

MOLLYPENNY
UNIQUE, TRADITIONAL & GALLERY STYLE
FRAMEMAKER
• FOR ARTWORKS ON ALL MEDIA, ANY SIZE
• BOXWORK FOR MEDALS & EPHEMERA
• CANVAS STRETCHING
• MIRRORS • REPAIRWORK
BY APPOINTMENT:
0412 194 760
mollypenny1@gmail.com

HAIR DRESSER

Debbie's Salon
Mens & Ladies
HAIRDRESSER

for all your Hair Care
Closed Tuesdays
Sat. mornings by appt.
27 Harker St., Maldon
Ph: 5475 2400

JP

Justice of the Peace (JP)
Local JP Margaret McKnight can be available for witnessing documents at the Community Centre by appointment.
Contact: 5475 2440 or 0439 752 465

PAINTING


GIVING YOUR HOME THE COAT IT NEEDS
Interior & Exterior
Residential & Commercial
New/Old houses
Staining
Roofs
Over 15 years experience
Free Quotes
Ph: Daniel
0400 090 480

PAINTING

INTERIOR REPAINT SPECIALIST
Alan Chapman
"Not just a Painter"
wallpaper stripping
plaster repairs and more...
No job too small
0423 475 431
Maldon

PAINTING

Jim's Painting

0458 374 579

PAINTING

Malcolm Stone Painting Services
Maldon & Surrounds
Over 40 years Experience

All types of painting Interior - Exterior - Inc. Heritage
Please call Mal on
0400 417 417
Maldon

PET CARE


Maldon Vet Clinic
Opening hours:
Tues - Fri 9am - 5pm
Ph 54 751 751
Fear-free consultations and home visits available

48 Hornsby Street
Maldon
Emergencies
0492 805 480

PET CARE


Mutz Kutz
All your pet grooming needs
Pet & stock feed + accessories
Bookings Essential
5475 1212
57-59 Main Street
Maldon

PLASTERING

Maldon Plastering Services
Heritage restoration, new homes, extensions and renovations.
No job too small.
Phone Richard Port
0412 397 404

PLUMBER

Steve Kile
Licensed Plumber & Gasfitter
VBA Lic No 28819
Ph. 0409 638 966
All your plumbing, gasfitting, roofing & drainage needs at competitive prices.
Free quotes/estimates,
32 yrs experience
stephenkile@outlook.com

STOCK FEED

Stock Feed and Pet Food
Brands incl: Black Hawk, CopRice, Cobber and Barastoc Poultry Feed & Wild Bird Seed.

FREE LOCAL DELIVERY
Open 7 days a week
14 High St, Maldon.
Ph: 5475 1018
S P MACHINERY



The Tarrangower Times is bound by the Standards of Practice of the Australian Press Council. If you believe the Standards may have been breached, you may approach the newspaper itself or contact the Council by email (info@-presscouncil.org.au) or by phone ([02] 92611930). For further information see <http://www.presscouncil.org.au>.




4.1 million Australians read *community newspapers* in print.

emma™ 12 months to February 2017. Readership based on last four weeks.
Survey conducted by Ipsos MediaCT, people 14+ ; Nielsen DRM February 2017, People 14+ only.


DEATHS

FLETCHER
Stephen John
05/07/1962 - 25/06/2021



Dearly loved Son of Ruth and Ted Fletcher.
Loved Brother of Trudi and Jim.
Loved Uncle of Jack, Conor, Charlie & Ella.

Stephen's Funeral Service was held on July 2nd, 2021
in Castlemaine,
followed by a Burial at the Maldon Cemetery.




DEATHS

Dorothy Louise Gleeson
18.5.1922 – 1.7.2021
Loved wife of Henry [dec].
Dearly loved and loving Mum of
Mandy and Ian [Spike] Long.
Much loved and adored Nana to
Sarah and Blake, Nathan and Lesh.
And the most doting Great Nana to Ella Louise.

You scripted your last day
as you would have wanted it,
quickly, peacefully and with your family.
You have left a hole in our heart
that is now filled with many beautiful memories
of our devoted mum and nana.
Our hearts are breaking and tears flowing
but you are now free to dance with the Angels.

In keeping with Dot's wishes,
a private funeral has been held.



PUBLIC NOTICES

BENDIGO - YOUR COMMUNITY NEEDS YOU!
**VOLUNTEER WILDLIFE RESCUE
& TRANSPORT TRAINING**
BENDIGO NEIGHBOURHOOD HUB
155 CROOK STREET, STRATHDALE 3350
Saturday 14 August 2021
9:30am - 4:00pm



You are invited to become a trained volunteer wildlife rescuer in your community. This training covers rescue techniques for common species in your region. This is an opportunity to meet with and learn from experienced wildlife rescuers.

BOOKINGS ESSENTIAL
Places are limited to the Bendigo region and surrounding areas.
To register, visit the Wildlife Victoria website here:
<https://www.wildlifevictoria.org.au/rescue-and-transport-training-registration>
\$90 per person

WILDLIFE VICTORIA

Seen anything interesting?
Call the *Times* on: 5475 2256

PUBLIC NOTICES

HORRIGAN, Lynette Anne
11.7.47 to 5.7.21
Daughter-in-law of Norma and Merv sadly passed
in St John of God Ballarat after a long illness.
Loved wife of Les and much loved mother of Glen.
Sister of Fay, Doug, Geoff, Marie and Gail (dec).
Privately cremated and to be interred at Castlemaine
with her parents.

**Maldon Floral Art and
Garden Club
A G M**
Monday 9th August
At 2pm
The Community Centre
Plus the Annual Swap
Meet.

Advertising deadline
12 noon Tuesday
Phone 0404 357 556

Proudly
sponsored
by

**Maldon Newsagency
& Tattsлото**
TATTS INSTANT SCRATCH-ITS
Scratchie sales have returned to Tatts.
Try your luck with Tatts Instant Scratch-Its (\$1-\$10) at Maldon Newsagency.
We are not just a paper/magazine Lotto shop.
Come and check out our range of ever changing products.
Open for your convenience from 5.30am daily.
Use us at your convenience.



PUBLIC NOTICES

Maldon Golden Movies
presents
Bohemian Rhapsody

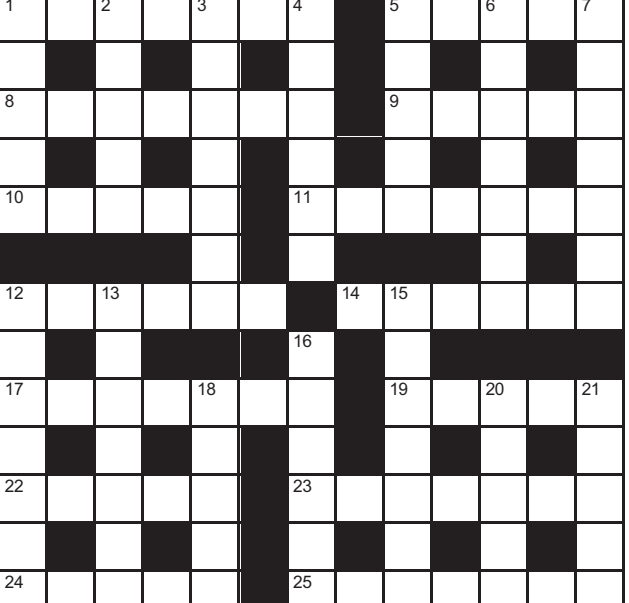


THURSDAY 15 JULY 2021
7.15 for 7.30pm start
BYO smart phone to scan QR code
2021 Membership: July to December @ \$15 pp.
Band Hall, Maldon Neighbourhood Centre, Francis Street

**Tarrangower Times
NEW OFFICE
HOURS**
Monday:
9am - 11am
Tuesday:
9am - 12pm
Wednesday:
9am - 1pm
Ph: 5475 2256

**CROSSWORD
Number 808**

Across
1 Grimaced
5 Move to music
8 Train network
9 Concur
10 Thick
11 Most tidy
12 Dunked
14 Followed orders
17 Frightened
19 Left after fire
22 Messages
23 Student
24 Avoids
25 Refurbish




Solution to No. 807

G	R	U	B	B	Y	O	F	F	C	U	T
R	P	R	P	L	O	E					
O	R	E	G	A	N	O	O	G	R	E	S
O	N	V	S	U	D	T					
V	O	D	K	A	S	U	R	V	I	V	E
Y											
	U	N	D	O	U	B	T	E	D	L	Y
A	E										
C	A	R	E	F	U	L	H	O	T	E	L
A	V	O	I	A	O	I					
C	H	O	I	R	T	R	U	S	T	E	D
I	U	C	Y	S	A	E					
A	N	S	W	E	R	S	T	A	L	K	S

Rainfall Baringhup					Rainfall Maldon					Rainfall Newstead				
Week Ending 6.7.21					Week Ending 6.7.21					Week Ending 6.7.21				
6.9mm					15.0mm					12.4mm				
Monthly Totals So Far:					Monthly Totals So Far:					Monthly Totals So Far:				
Month	2021	2020	2019		Month	2021	2020	2019		Month	2021	2020	2019	
Jan	92.9	44.6	3.2		Jan	83.4	35.2	4.8		Jan	101.6	53.6	5.0	
Feb	8.9	56.3	12.6		Feb	17.0	52.8	21.6		Feb	13.6	38.0	18.2	
Mar	72.3	32.8	4.3		Mar	83.8	37.0	7.6		Mar	67.2	35.8	6.2	
Apr	9.8	99.6	4.5		Apr	14.4	145.4	5.6		Apr	11.4	107.6	5.0	
May	42.0	49.2	100.8		May	53.6	66.2	115.5		May	53.2	56.2	113.6	
June	54.0	38.3	75.2		June	81.0	49.2	92.2		June	62.6	46.6	82.8	
July	6.9	23.5	35.3		July	15.0	32.8	53.6		July	12.4	29.4	43.0	
Aug		48.7	45.7		Aug		62.2	57.6		Aug		69.6	51.6	
Sept		40.9	19.1		Sept		54.6	29.4		Sept		46.8	31.2	
Oct		47.1	4.9		Oct		73.2	8.6		Oct		56.2	9.8	
Nov		25.7	38.6		Nov		37.2	43.0		Nov		22.8	42.0	
Dec		29.1	3.9		Dec		39.2	9.8		Dec		31.2	8.4	
TOTAL	286.8	535.8	348.1		TOTAL	348.2	685.0	449.4		TOTAL	321.4	593.8	416.8	

Water Storage Capacity as at 6.7.21						
Site	Cairn Curran	Max ML	147,130	Current ML	58,653	% Full 39.86
Site	Malmsbury	Max ML	12,034	Current ML	3,318	% Full 27.6



The Book Wolf
Who said of their book, 'It's a love story, pure and simple?'
0487 193 223
1/26 High Street

48

Main

Local Bar

Local Beer

Live Music

Open: Every Thursday, Friday, Saturday & Sunday

Maldon Newsagency & Tattslotto

Open every day of the year! Shop when it suits you!

Come and browse our ever changing range of cards, ribbon and wrap.

Telstra & Optus prepaid mobile cards in stock.

Home delivery of all major newspapers, magazines & The Tarrangower Times.

e

ftpos

Your local specialist stationery store

Phone 5475 2433

In store ATM

Times

Your Paper, Your Stories, Your News!

ISSN 1834-4119

9 771834 411010

MALDON GOLF CLUB

CHILLING winds, consistent rain and showers and near-freezing temperatures were not the ideal playing conditions for golf last Saturday.

Nevertheless, an enthusiastic group of golfers contested the July Monthly Medal with the Winner to play other monthly Medal winners in the Medal of Medalists final on 30 October.

Missing in action over the past few months, due to operation on his elbow, golfer Craig Borrow returned to the game with a vengeance and on a count-back of scores, edged out Harry Murray for the day's honours - both golfers scoring a nett 65. Craig extended thanks to his Surgeon for his new bionic elbow which has corrected his previous wayward golf shots and now sees him playing middle-of-the-fairway between tee and sand-scape.

Comfortable wins to Colin Windebank and Bob Briggs in their respective Jack Long Matchplay games against Oliver Messenger and Ian long has both golfers progressing to Round 3 of the Event.

RESULTS

...18-HOLE STROKE-JULY MONTHLY MEDAL and COUNT PUTTS...

WINNER	Craig Borrow	65 nett on countback
RUNNER-UP	Harry Murray	65 nett
BALL-WINNERS	Noel Olver	66 nett
	Nick VanWamel	67 nett
	Jeremy Tripcony	67 nett
COUNT-PUTTS	Harry Murray	21 putts
NEAREST the PIN	Jeremy Tripcony	HOLE 2
Ca\$h-HOLE	Ian Long	HOLE 17

...JACK LONG MATCHPLAY...

Colin Windebank defeated Oliver Messenger

3/1

Bob Briggs defeated Ian Long

4/3

☆ Jenny after raking the piste – just in case!

ON Sunday 4 July, due to the freezing inclement weather the Piste Artistes were not sure whether to play or not. One brave soul decided to rake the leaf litter off the piste just in case. Lo and behold the weather cleared up for a while. Jenny deserves a medal for positivity!

With somewhat diminished numbers, six teams played gamely on in what could best be described as arctic conditions when the wind chill factor dropped the temperature. We finished two games just as the rain started again in time to go home to warm fires and mulled wine. The Maldon in Winter celebrations are certainly living up to their name.

Despite the cold and gritty boules, picking up grot from a very damp piste, and what can only be described as snifter weather, or a ‘two hanky day’, spirits remained high while battling with gritty boules, cold wind and looming rain.

In first place, were Kevin and Jenny with 2 wins with +16 points. Second place went to Cap’n P and Mme Bleue with +15 points.

Third place was taken by Carole and Steve with 2 wins and +6 points. Followed in fourth place by Viv and André with 0 wins and -7 points. Fifth place went to Geoff and Joan, with 0 wins and -12 points.

Sixth place went to Ann and Blakey with 1 win and -18 points. They were lucky last and winners of the *Losers’ Chocs* with an equally low number of points to the previous record losers’ title in June.

We play again on Sunday 18 July, at 1.45 for a 2pm start. Come and join us on the Penny School piste, help rake it, and feel free to bring a friend. Let’s hope it is warmer than today

Mme Bleue

☆ First prize Garden Art Bird’s Nest with Marble Eggs.

THE Maldon Croquet Club recently ran a raffle to assist with fundraising for a reverse cycle air conditioner and to help with normal running costs.

Due to COVID restrictions, the club is down on paid green fees.

The results of the raffle drawn on Tuesday 22 June are:

1st prize Garden Art Bird’s Nest with Marble Eggs, valued at \$180 and donated by Ray Austin.

Winner: Wendy Ritchie, Maldon.

2nd Prize Trailer Load of Wood, valued at \$150 and donated by Cheryl and Alan Lang.

Winner: John Crofts, Maldon.

A special thanks to everyone who supported the club, selling and buying tickets and to Maldon Butchery and Maldon Newsagency for allowing us to sell in the front of their premises.

ROB LEESON

Photographer

Pets, People, Portraits

0400 100 075

www.robleeson.com.au

SCOTTY’S

•DRIVEWAYS • SHED SITES •NOXIOUS WEEDS & RUBBISH REMOVED • POST HOLES • MOBILE SOIL SCREENING SERVICE

BOBCAT & TIPPER SERVICE

• LANDSCAPING • GARDEN MAINTENANCE • SOIL, SAND AND CRUSHED ROCK

For Honest, Prompt & Reliable Service

Call Lee on 0417 361 830 ah 5475 2993

•ALAN

•CHERYL

•STEVE

LANG

CARTAGE & DRAINAGE CONTRACTORS

House Sites - Driveways - Postholes

General Trenching & Excavations

Septic Tank Installations

Sand - Soil - Gravel

(Own supply of Muckleford Gravel)

Ph: 5475 2218 0438 560 128

12 • TARRANGOWER TIMES Friday, July 9, 2021